

## WASTE 101: TRASH & RECYCLING BASICS

Waste Management provides trash and recycling services for the City of Cedar Hill. Please contact Waste Management Customer Service at 972-315-5400 for trash and recycling issues.

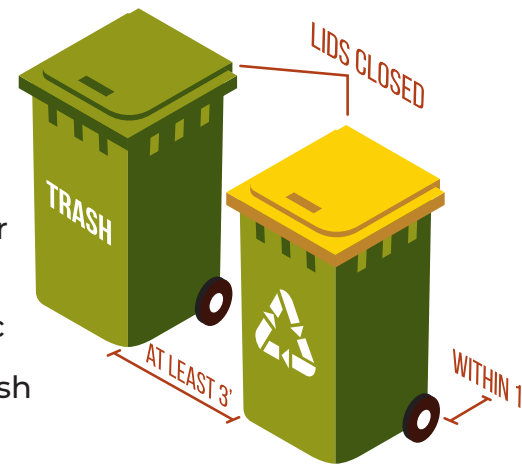
Trash and recycling are collected once per week. Bulk items and green waste are collected once per month (see the map inside for your collection schedule).

Each single-family home is provided a green 96-gallon cart with a yellow lid for recyclable materials and a green 96-gallon cart with a green lid for household trash. All trash and recyclable materials must be inside the cart with the cart lid properly closed. Materials left outside carts on collection day, bagged or not, will not be collected. Recycling carts will not be collected if they contain anything but acceptable recyclable materials (see inside for details). Only Waste Management carts are serviced. Any other containers will not be serviced.

Carts must be placed at the curb—or in the alley, if an alley collection—by 7 a.m. on your collection day. Carts may be set out after 6 p.m. or one hour before sunset the night before pickup, whichever is earlier.

## CART PLACEMENT INSTRUCTIONS

- Place carts within one foot from the curb—or fence, if in an alley—with the handles facing the home or fence.
- Give carts plenty of space. The automated control arms need at least three feet of space on all sides of your carts in order to pick them up. Keep trash and recycling carts at least three feet apart and at least five feet from cars, mail boxes, gas meters, and other nearby objects.
- Trash must be contained. Place your trash in securely tied plastic bags. All bags must fit inside the cart with the lid closed. Any trash left on top of or beside the cart will not be collected.
- Set it out by 7 a.m. on your collection day.
- To submit a trash cart repair request, please visit [cedarhilltx.com/trash](https://cedarhilltx.com/trash).



## IMPORTANT NOTE ABOUT PARKING

Parking too close to the alleyway can block trash-collection vehicles from servicing your home. Make sure all visitors and residents park more than 25 feet from the alley entrance/exit on both the alley side of the street and the opposite side of the street. (City Ordinance No. 2019-674)



## IMPORTANT INFORMATION INSIDE

about updates to your residential trash, recycling, bulk, brush, and household hazardous waste collection services.

Para información en Español, llame 469-272-2931



SCAN ME

Sign up for service reminders and alerts via text, email, or phone at

**CEDARHILLTX.COM/TRASH**



# 2026 Trash & Recycling Services Guide



**Collection Map & Schedule • Know What To Throw: Recycling & HHW • 2026 Calendar**



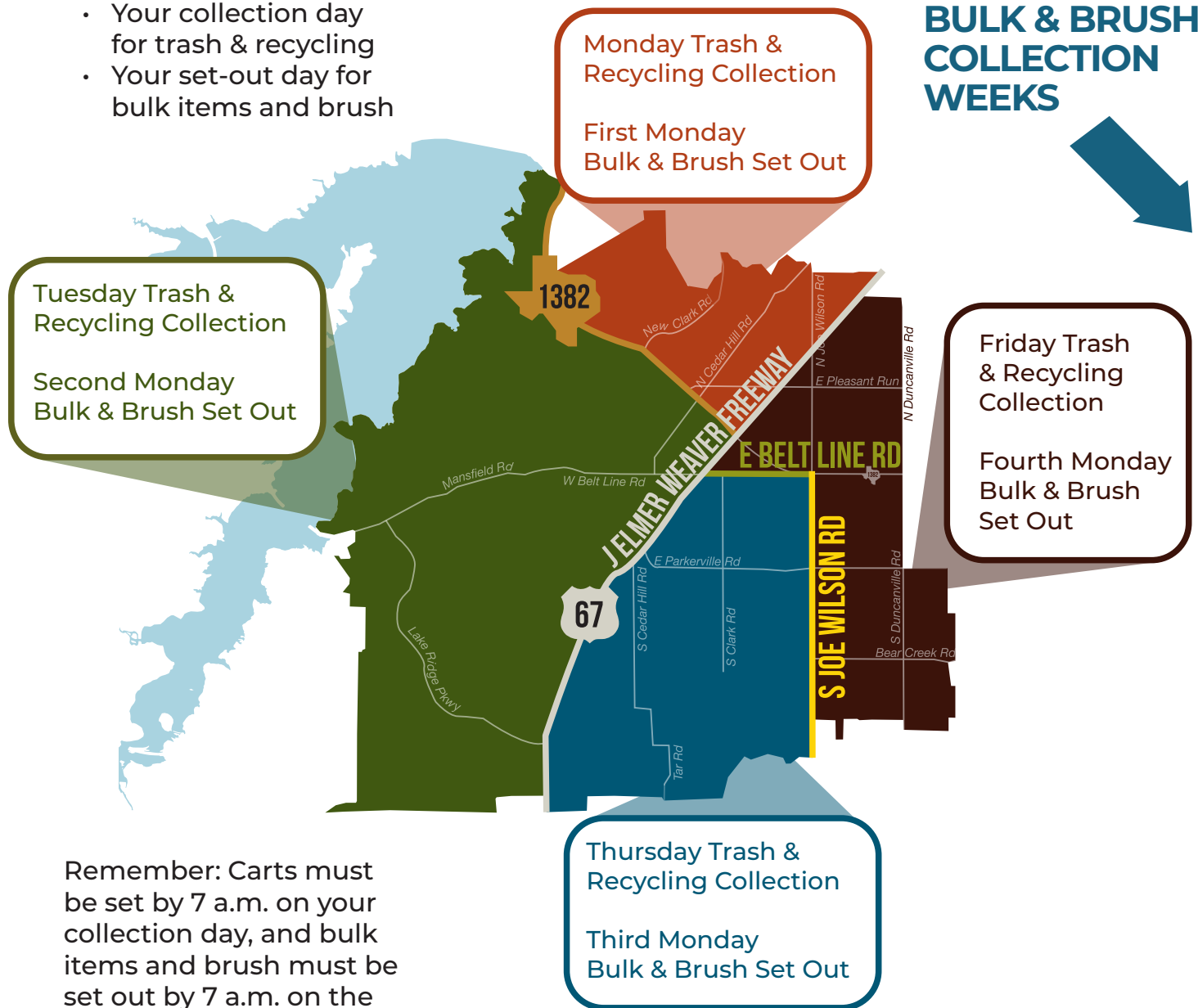


## COLLECTION SCHEDULE & MAP

Use this map to identify:

- Your collection day for trash & recycling
- Your set-out day for bulk items and brush

### BULK & BRUSH COLLECTION WEEKS



Remember: Carts must be set by 7 a.m. on your collection day, and bulk items and brush must be set out by 7 a.m. on the Monday morning of your collection week.

## HOLIDAYS & INCLEMENT WEATHER

WM observes three holidays: Thanksgiving Day, Christmas Day, and New Year's Day. For 2026, Thanksgiving Thursday collections will be serviced on Friday, and Friday collections will be serviced on Saturday. Christmas and New Year's Day Friday collections will be serviced on Saturday. Bulk and brush collection run as usual during holiday schedules.

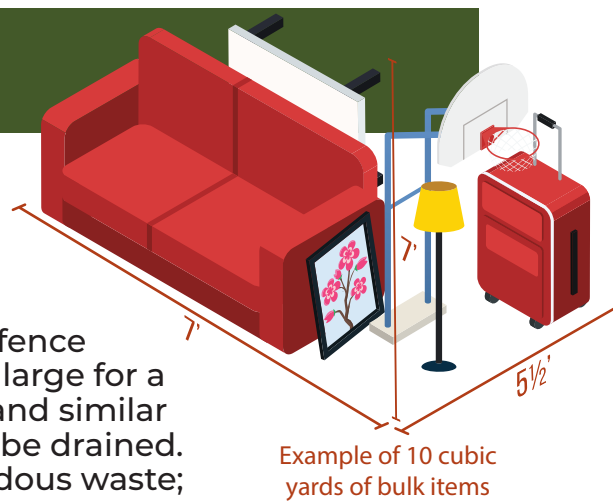
Service may also be impacted due to inclement weather, find updated information and sign up for service alerts and reminders at [cedarhilltx.com/trash](http://cedarhilltx.com/trash).

## BULK & BRUSH

Bulk items and brush are collected together in one pile once per month at the curb (even if you have an alley) and are limited to 10 cubic yards.

Acceptable bulk items include: appliances, furniture, fence sections, bags of leaves or other residential items too large for a container. Refrigerators, freezers, window A/C units, and similar items must be tagged as "free of freon". Toilets must be drained. Bulk items do not include: construction debris; hazardous waste; vehicles parts, tires, televisions or electronics.

Bulk items and brush must be placed at the curb by 7 a.m. on the Monday morning of your collection week. Waste Management may collect your items any day of the scheduled week. Refer to the Collection Schedule & Map to determine your set-out day and collection week, which are color coded below for each month.



January 2026	February 2026	March 2026	April 2026
4 5-9 10 11 12-16 17 18 19-23 24 25 26-30 31	1 2-6 7 8 9-13 14 15 16-20 21 22 23-27 28	1 2-6 7 8 9-13 14 15 16-20 21 22 23-27 28 29 30 31	11 6-10 18 12 13-17 25 19 20-24 26 27-5/1
May 2026	June 2026	July 2026	August 2026
9 4-8 16 10 11-15 23 17 18-22 30 24 25-29	6 1-5 13 7 8-12 20 14 15-19 27 21 22-26 28 29 30	11 6-10 18 12 13-17 25 19 20-24 26 27-31	8 3-7 15 9 10-14 22 16 17-21 29 23 24-28 30 31
September 2026	October 2026	November 2026	December 2026
12 7-11 19 13 14-18 26 20 21-25 27	10 5-9 17 11 12-16 24 18 19-23 31 25 26-30	7 2-6 14 8 9-13 21 15 16-20 28 22 23-27 29 30	12 7-11 19 13 14-18 26 20 21-25 27 28-1/1

## DIY DISPOSAL (LANDFILL)

Once per quarter, at no cost, residents may take materials such as fencing, brush, and construction debris to the Waste Management landfill, 1201 N Central Avenue, Ferris, TX. The maximum quantity for disposal at no charge is three cubic yards per visit.

Residents will need to present their most recent utility bill and a driver's license with the same address shown on the bill. The landfill is open from 6 a.m. to 4 p.m. on weekdays and from 6 a.m. to noon on Saturdays. (The landfill is closed Thanksgiving Day, Christmas Day, and New Year's Day).

## RECYCLE RIGHT™

Every time you choose to recycle, you are giving that item a second life to serve a new purpose and save natural resources. Now more than ever it's important that only the right items, free from contamination, make their way into your recycling bin to help keep recycling, and our shared planet, sustainable.

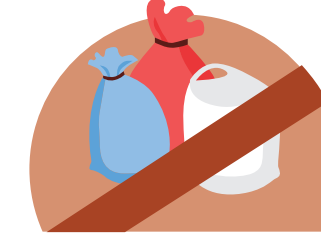
It's time to get back to the basics. The fact is that some recycling actions make a bigger impact than others. So please remember these three basic rules the next time you recycle.



Recycle clean bottles, cans, paper, and cardboard



Keep food and liquid out of your recycling



No loose plastic bags and no bagged recyclables



## HAZARDOUS WASTE AT YOUR DOOR

Residents can schedule home pick up for unwanted household hazardous waste materials through Waste Management's At Your Door Special Collection<sup>SM</sup>.



### Automotive Products

Antifreeze, batteries, brake fluid, motor oil and filters, fuels and more



### Paint Products

Caulk, glue, paint, spray paints, stains, strippers & thinners



### Electronics

Music players, TVs, DVD/CD Players, VCRs, cell phones, microwaves, computers



### Garden Chemicals

Fertilizers, insect sprays, herbicides, pesticides & weed killers



### Household Chemicals

Ammonia, heavy-duty cleansers, shower/tile cleaners, drain cleaners



### Household Items

Batteries, compact fluorescent lamps (CFL), thermometers, thermostats

**To schedule a home collection, visit [WMAAtYourDoor.com](http://WMAAtYourDoor.com) or call 800-449-7587 (M-F, 7 a.m. to 7 p.m.)**

**MATERIAL THAT WILL NOT BE COLLECTED:** ammunition, medicine, explosives, asbestos, tires, cooking oil, materials in leaking containers, commercial chemicals or hazardous materials in containers larger than five gallons in size. Acceptable materials are based upon Federal, State and local regulations.